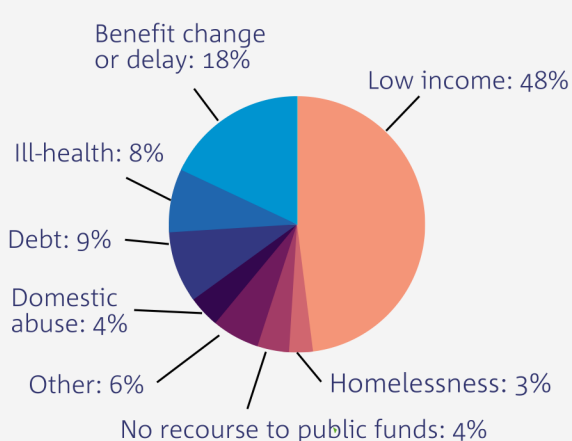
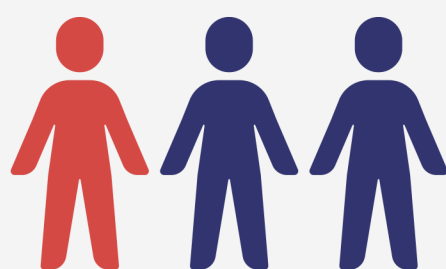


A TIME OF CRISIS

Wandsworth Foodbank provides emergency food, support and advice to local people and families experiencing poverty across Wandsworth Borough. Here's what we've been seeing in April 2021 - March 2022.

9,908 EMERGENCY FOOD SUPPLIES

In 2021-22, we provided 9,908 emergency food supplies to local people whose income didn't cover the cost of essentials - a 53% increase on pre-pandemic levels. More than 1 in 3 (36%) emergency food supplies were for children.



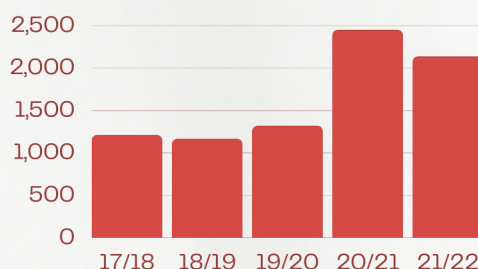
WHY DID PEOPLE NEED OUR FOOD BANK?

Half of all food bank referrals were for local people whose income from benefits and/or work was simply too low to cover the cost of essentials like food, rent and bills. In 2013, low income accounted for just 19% of referrals to Wandsworth Foodbank.



53% OF PEOPLE HAD A DISABILITY OR LONG-TERM HEALTH ISSUE

...or lived with someone who did. 3 in 4 of these guests said they'd skipped meals in the previous month, because there wasn't enough money for food. Half had been unable to heat their home properly.



WE HELPED 2,127 HOUSEHOLDS

In the last 5 years, the number of local households referred in poverty to Wandsworth Foodbank almost doubled, from 1,209 to 2,127. Food bank referrers include local schools, GPs, hospitals, advice agencies, Wandsworth Council teams and jobcentres.

Recently the price of things going up, food going up, electricity going up. Inflation going up and the pension increase not so much. It is only in the last 2 years that I have ever asked for help from anybody. I am 84. It frightens you. You think what can I do?

Wandsworth Foodbank guest, 2022



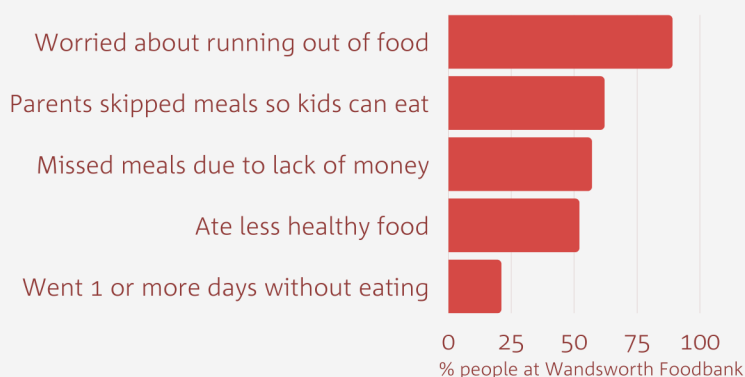
9 IN 10 REFERRERS SAID BENEFITS DIDN'T COVER ESSENTIAL COSTS

Inadequate benefit payments were cited as the top cause of 'low income' by 92% of food bank referrers, followed by low-paid work (78%) and deductions from benefits (62%).



9 IN 10 REFERRERS SAID COUNCIL EMERGENCY FINANCIAL HELP 'EXTREMELY IMPORTANT'

However only 6 in 10 referrers (57%) said applications to Wandsworth Council's crisis grants had been successful. Only 1 in 5 food bank guests reported receiving a crisis grant in the previous 3 months.

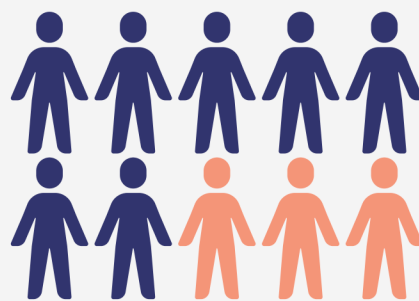


6 IN 10 PARENTS SKIPPED MEALS SO THEIR CHILDREN COULD EAT

People at the food bank reported low or very low food security. In the previous month, 9 in 10 people worried about running out of food before they had money to buy more, and 28% had gone one or more days without eating.

7 IN 10 PEOPLE EXPERIENCED POORER MENTAL HEALTH

Poverty is a risk to health. 7 in 10 people at the food bank reported poorer mental health during the previous month, and half experienced poorer physical health. Worryingly, one-third of local food bank referrers reported suicidal ideation or intent in people they needed to refer to Wandsworth Foodbank.



Everything's just too expensive now. I make a coffee and try to keep myself busy so I don't think about being hungry. Or I sit under the covers, leave the heating off and stay in one room. I've switched everything off apart from the fridge. I'm always crying.

Wandsworth Foodbank guest, 2022



572 HOUSEHOLDS HELPED BY OUR FOODBANK ADVICE PROJECT

Our four Foodbank Advisers provided expert advice and ongoing support to local people and families, to maximise their income and reduce the need for emergency food aid. Key issues included resolving problems with Universal Credit and disability benefits. The Foodbank Advice Project is a partnership with Citizens Advice Wandsworth.

97%

REFERRERS RATED OUR SERVICE 'EXCELLENT'

...and the rest rated it 'good'. One referrer said 'You are kind, generous and always do all you can to end the need for your service.'

93%

GUESTS RATED OUR SERVICE 'EXCELLENT'

...and the rest rated it 'good'. Guests said they felt welcomed and supported, and glad of the extra help available, including from our Foodbank Advice Project.

The Foodbank has been a great support. You can come here, you can talk to people, they help you. The Foodbank Advice Project has helped me get a little bit extra in Asda vouchers from Wandsworth Council; and helped me to apply for disability benefits.

Wandsworth Foodbank guest, 2022



WE'RE ASKING FOR THE REAL LIVING WAGE FOR WANDSWORTH

We're calling on all candidates for the local election on 5 May 2022 to commit to Wandsworth Council becoming an accredited Real Living Wage employer - the only wage that's based on the real cost of living.

23 out of 33 London Councils already have. Will Wandsworth Council be next?



WE'RE ASKING FOR MORE GENEROUS & RAPID EMERGENCY HELP FOR PEOPLE

Wandsworth Council has received £5million+ government funding to provide emergency support and essentials to residents on low incomes during the pandemic.

We're asking the Council to use this and future funding to provide more rapid, effective and generous financial support to residents when they need it most.